

# SM West Newsletter

Thursday, Sept.30, 2021 - Issue #8



## Contact Information

8800 W. 85th Street  
Overland Park, Kansas 66212  
<http://smwest.smsd.org/>

Phone: (913) 993-7800  
Fax: (913) 993-8099  
Report an Absence: (913) 993-7845

Follow us on Facebook, Twitter and  
Instagram

**Facebook**

Twitter

Instagram



## Important Numbers

Main Office – 993-7800

Counseling Office – 993-7830

**Attendance Hotline – 993-7845 Please call this number to report an absence**

Spanish Interpreter – 993-7840

Oficina Principal – 993-7800

Oficina de Los Consejeros – 993-7830

**Línea de Asistencia 24 horas al día – 993-7845**

Intérprete de español – 993-7840





Shawnee Mission West

# Trunk-or-Treat

Children in grades  
PreK-3<sup>rd</sup> are invited to  
Shawnee Mission  
West's Trunk-or-Treat.

This event is **FREE**,  
but please bring canned



SMW student organizations are teaming together to provide  
fun activities & treats for this event!



Wednesday, Oct.  
27, 2021

6:00 – 7:30 PM

Shawnee Mission West HS  
Antioch & 85<sup>th</sup> Street  
South Parking Lot



## SCHEDULE CHANGE for OCT. 11-OCT. 15 - AND SPECIAL MESSAGE FOR SENIORS

The Week of Oct. 11-Oct. 15 is not a typical week.

1st - There is a Teacher Work Day on Friday Oct. 15th -  
therefore No Students will be in attendance.

2nd - Wednesday Oct. 13 is an Early Release for 9-12 graders.  
Administration of several assessments will occur.

3rd- Seniors have a special opportunity to create a unique  
experience for themselves on that Oct 13th day. Please see the  
flier pictured and Attachment below this article.

Please see below for important information:

### SCHEDULE FOR WEEK:

Monday, October 11 – ALL 7 periods

Tuesday, October 12th – ODD (1, 3, 5, and 7)

Wednesday, October 13th – TESTING (7:40-11:30) & Power Hour with lunch until 1:05 pm

Thursday, October 14th – EVEN (Late Start, 2, advisory, 4, and 6)

Friday, October 15th – Teacher Work Day – NO STUDENTS

Here are the grade level activities for the Oct. 13th Assessment day.

9th grade – Pre-ACT test

10th grade – Practice ACT OR PSAT - if families have pre-applied

11th grade – Practice ACT (district paid) or PSAT - if families have pre-applied

12th grade – Students are encouraged to do a college visit, community service, or job shadow on this day.

Thank you.



SHAWNEE MISSION  
SCHOOL DISTRICT

Shawnee Mission West High School

**Senior Exploration Day – Wednesday, October 13, 2021**

Dear Shawnee Mission West Parents/Guardians and Seniors,

On Wednesday, October 13, 2021, students in the Class of 2022 will be given a unique opportunity to prepare for their future. While underclassmen are testing in the morning, seniors may be excused from class to participate in one of the following activities: job shadow, college visit, community service, or take an Practice ACT with us. *Students must provide their own transportation to the activity they choose.*

Please discuss the above options with your student, complete and sign the form below, and have your student return it to Student Services/Counseling Department by Thursday, October 7<sup>th</sup>. This will help us to better track senior attendance for October 13<sup>th</sup>.

**Seniors who do not return the form by October 7<sup>th</sup> must report to school on October 13<sup>th</sup> or they will be counted unexcused. They will be in a study hall in the morning, lunch, and then early release at 1:05 p.m.**

If you have questions, please contact the Student Services Department at (913) 993-7830.

Sincerely,

SMW Administrators and Counselors

.....  
Senior Name \_\_\_\_\_ Student ID# \_\_\_\_\_

is excused from school on Wednesday, October 13<sup>th</sup>, because he/she will be participating in the following activity arranged by the student and parent:

\_\_\_\_\_ College Visit (Name of college): \_\_\_\_\_ )

\_\_\_\_\_ Job Shadow (Location of job shadow): \_\_\_\_\_ )

\_\_\_\_\_ Community Service (Location of activity): \_\_\_\_\_ )

\_\_\_\_\_ Taking a Practice ACT at SM West – You will be assigned a specific classroom.

Student Signature \_\_\_\_\_ Date \_\_\_\_\_

Parent Signature \_\_\_\_\_ Date \_\_\_\_\_



Senior Exploration Letter 2021.docx

[Download](#)  
369.5 KB

## Latinos of Tomorrow

SM West has started a new student organization: Latinos of Tomorrow. Students of all backgrounds are welcome to join us. The dates of our future meetings are on the attached poster

SM West ha empezado una nueva organización estudiantil: Latinos of Tomorrow. Los estudiantes de todo tipo pueden reunir con nosotros. Las fechas de nuestras reuniones están en el poster apegado.  
Questions/Preguntas: Talk to Ms. E or Ms. Urenda





# Survey Request

*Shawnee Mission School District students in the Medical Health Sciences Signature Program are partnering with researchers at the University of Kansas to study the effects of sports specialization on teens and young adults.*

*Data collection for this project involves a short anonymous survey that the researchers would like to send to your student-athlete, with your permission. This invitation is for any student-athlete, including athletes who might not be involved in fall sport. If you are willing to allow your student athlete(s) to complete this survey, please click on the link provided at the bottom of the attached form.*

*Thank you.*

Dear Parent,

Your student is being invited to participate in a web-based online survey on sport specialization and its associated outcomes. This is a research project being conducted by The University of Kansas Health System and J.P. Darche, MD, a sports medicine physician at the University of Kansas. The survey is being conducted in accordance with local high schools.

It should take your student approximately 10 minutes to complete.

#### PARTICIPATION

Your student's participation in this survey is voluntary. You may refuse to allow your student to participate in the research, or your student may exit the survey at any time without penalty. Your student is free to decline to answer any particular question they do not wish to answer for any reason.

#### BENEFITS

Your student will receive no direct benefits from participating in this research study. However, your student's responses may help us learn more about the effects of early sports specialization and how it compares to various psychological outcomes, physical injuries, and other medical complications.

#### RISKS

There are no foreseeable risks involved in participating in this study other than those encountered in day-to-day life.

#### CONFIDENTIALITY

Your student's survey answers will be sent to a link at REDCap where data will be stored in a password protected electronic format. REDCap does not collect identifying information such as your student's name, email address, or IP address. Coaches, athletic trainers, teammates, or any school personnel will NOT have access to any of your student's responses. No personally identifiable information (name, birthday, address, etc.) will be collected, ensuring that your student's responses are unidentifiable. If any combination of the data makes your responses identifiable, they will not be reported when the study team publishes.

#### CONTACT

If you have questions at any time about the study or the procedures, you may contact my research assistant, Ezra Goodrich at [egoodrich@kumc.edu](mailto:egoodrich@kumc.edu).

If you feel your student has not been treated according to the descriptions in this form, or that your student's rights as a participant in research have not been honored during the course of this project, or you have any questions, concerns, or complaints that you wish to address to someone other than the investigator, you may contact the University of Kansas Medical Center Institutional Review Board by email at [humansubjects@kumc.edu](mailto:humansubjects@kumc.edu).


**ELECTRONIC CONSENT:** Please click on the link below to provide consent for your student to participate in this study. You may print a copy of this consent form for your records. Clicking on the "YES" button indicates that:

- You have read the above information
- You voluntarily agree to allow your student to participate
- Your student will not share any of their responses or other's responses
- You understand that your student's responses are entirely confidential. Absolutely no coaches, team trainers, team physicians, or school staff will have any form of access to your student's responses.

**Link for electronic consent:** <https://redcap.kumc.edu/surveys/?s=YMKEFC9D8E>



KUMC\_SportsMedicine\_ParentLetterSurvey for SMORE  
newsletter.pdf

 **Download**  
422.0 KB



## Notes from SM West Student Services

**Dates posted by Ashlyn Kirkpatrick - SM West College Advisor**

The 2022-2023 FAFSA opens October 1st. Check out our financial aid events below for help filing. The 2022-2023 FAFSA uses 2020 taxes. Both the students and one parent will need to create an FSA ID. See Ms. Kirkpatrick with questions.

October 5th during seminar: Create an FSA ID

October 5th 6pm (virtual): SMSD FAFSA event

October 6th 6-8pm: Future Focus Fiesta at SMS in Spanish

October 7th 5:30pm: FAFSA Completion at SMW

October 14th 6:30pm: Step-by-Step through the FAFSA (virtual by Johnson County Library)

October 18th 6pm: FAFSA Completion at SMW

October 19th during seminar: Virtual College Visits for JUNIORS: Mizzou, University of Chicago, University of Kansas, Wichita State, and Kansas State.

October 19th 7pm: Learn about Saving and Finding Free Money for College (virtual by Sallie Mae)

October 20th 12pm: Learn about Saving and Finding Free Money for College (virtual by Sallie Mae)

October 26th during seminar: College Applications

All sign up forms are available at <https://linktr.ee/CollegeSMW>

Scholarship Spotlight

**DUE OCTOBER 15TH:** American Muscle Scholarship for \$2,500 students interested in an automotive field and enrolling the

Spring 2022 semester

DUE OCTOBER 31ST: Up to \$30,000 - Voice of Democracy audio essay open to 9th-12th graders

DUE OCTOBER 31ST: \$20,000 Coca-Cola Scholars Program

DUE NOVEMBER 18TH: Jack Kent Cooke College Scholarship - Up to \$55,000 for students pursuing a 4-year degree with a 3.5 GPA and unmet financial need

For a list of upcoming scholarships [click here](#)

**Apply to be a college ambassador [here](#) - this is a great resume-builder!**

**Find all upcoming event sign ups [here](#)**

If you need help applying for scholarships or have any questions, reach out to your College Adviser at [ashlynkirkpatrick@smsd.org](mailto:ashlynkirkpatrick@smsd.org) AS SOON AS POSSIBLE!

Follow @CollegeSMW on Twitter and Instagram for updates, deadlines, and events!

Alpha Breakdown of Counselors:

Laura Raney LAST NAMES A - E [lauraeshelman@smsd.org](mailto:lauraeshelman@smsd.org)

Kim Urenda LAST NAMES F - K [kimurenda@smsd.org](mailto:kimurenda@smsd.org)

Katy Reda LAST NAMES L- Rh [katyreda@smsd.org](mailto:katyreda@smsd.org)

Jamie Heller LAST NAMES Ri- Z [jamieheller@smsd.org](mailto:jamieheller@smsd.org)

ACT REGISTRATION: Remember your senior has the opportunity to take the ACT through the National Testing Site at [www.act.org](http://www.act.org) three times here in the fall. We highly recommend you register early as these dates and testing centers can fill up quickly. JUNIORS - we recommend you take the "official" ACT in the spring semester. The state of Kansas is paying for all SM West Juniors to take the test this spring on March 1st. We will register your students for that here at school and send out more information closer to the dates.

The fall ACT Test dates are:

October 23, 2021\*\* September 17, 2021 October 1, 2021

\*December 11, 2021\*\* November 5, 2021 November 19, 2021

ACT Register online: [www.actstudent.org](http://www.actstudent.org)

Cost of tests: ACT \$60 and ACT Plus Writing is \$85.

Test Date Registration Deadline Late Deadline (\$38 fee)

From your West Social Workers: Please remember that if you or your child needs some extra support, there are professionals ready to help. Johnson County Mental Health has services for families and teens.

[Children and Family Services Brochure](#)

[Children and Family Services Brochure en Español](#)

You are always invited to call one of us as well to discuss how we can support your student.

Mary Lea Kieffer A-K 993-7836

Donna Holmes L-Z 993-7832

Please do not ever be afraid to ask for help! We are here for you!

Por favor recuerda que puede contactar a nuestros trabajadores sociales para obtener apoyo adicional.

Mary Lea Kieffer (Alpha A-K) [marykieffer@smsd.org](mailto:marykieffer@smsd.org) 913-993-7836 o

Donna Holmes (Alpha L-Z) [donnaholmes@smsd.org](mailto:donnaholmes@smsd.org) 913-993-7832.

[Family Support Link](#) (Enlace de Pedir Apoyo- para su Familia)

[Student Support Request Form](#) (Enlace para Pedir Apoyo- Estudiante)

### **American Cancer Society Partners with Shawnee Mission West for the 10th year to host Relay For Life**

Calling all Shawnee Mission West students and parents! Join us for the 10th Relay For Life event at Shawnee Mission School West this October 1, 2021! Together we are going to fight to beat our biggest rival – cancer.



Relay For Life is a fun-filled event that mobilizes communities throughout the country to celebrate survivors, remember loved ones, and raise money for the fight against cancer.

Relay For Life is a great way for students to get involved in a fun event and help save the lives of those with cancer. Students who are willing to give their time and energy to this exciting event, as a volunteer or participant, are making a commitment to the fight against this disease and letting the community know that you can beat cancer.

**Please encourage your student to get involved in this amazing event. Students can start forming teams of 6- 14 people.** Each participant will be asked to pay a \$15 commitment fee upon registration. Each participant is asked to raise additional funds from donations. All participants, regardless of age, must have a Permission Form signed by their parent or legal guardian. It will be held on the SM West track. For more information about Relay and for students to register teams online please go to [www.relayforlife.org/shawneemissionyouthks](http://www.relayforlife.org/shawneemissionyouthks). The festivities will get underway at 6:00 p.m. Friday evening and conclude at 11 pm.

Volunteers are needed to organize and recruit teams, seek community support, coordinate logistics, find refreshments and prizes, plan entertainment, and lend their support in any way. Needless to say, we need your support to make this event successful.

We are also searching for survivors of cancer to participate in the opening ceremony lap. If you are interested, please fill out the attached form and return before October 1st or sign up online at [www.relayforlife.org/shawneemissionyouthks](http://www.relayforlife.org/shawneemissionyouthks).

If you would like to purchase a luminaria in honor of a cancer survivor or in memory of someone who passed away due to cancer, please fill out the attached form or purchase online at [www.relayforlife.org/shawneemissionyouthks](http://www.relayforlife.org/shawneemissionyouthks).

For additional information about this year's event, please contact McKenzie Marshall, ACS Staff Partner, at 816.842.7111 or [mckenzie.marshall@cancer.org](mailto:mckenzie.marshall@cancer.org).

Mary Lea Kieffer is the faculty sponsor and can be reached at 913-993-7836 or [marykieffer@smsd.org](mailto:marykieffer@smsd.org).

## Join us in the fight against cancer. Light a Luminaria for someone you love.



Relay For Life of Shawnee Mission West  
October 1, 2021

Luminarias honor every life touched by cancer. You can dedicate them to a love one lost, someone currently battling, or anyone who has overcome cancer. Shawnee Mission West students will decorate each luminaria with names and messages for whom they are dedicated. After dark, the luminarias are lit in remembrance of the life touched by cancer. During this special ceremony, relay participants share a moment of silence to remember and honor loved ones. Proceeds from this event help support the American Cancer Society's mission to provide education, patient services, advocacy, and research to find a cure.

To purchase a luminaria and help light the way to a cure, please fill out the information below or visit [www.RelayForLife.org/ShawneeMissionYouthKS](http://www.RelayForLife.org/ShawneeMissionYouthKS)

A donation of \$10 per luminaria is suggested. You can give this to a student participant, purchase online or mail to:

American Cancer Society  
Attn: RFL of Shawnee Mission West  
1100 Pennsylvania Avenue  
Kansas City, MO 64105

I want to make a difference in the fight against cancer!

I would like to purchase a luminaria for a suggested donation of \$10.

**\*PLEASE PRINT CLEARLY!\***

In honor of \_\_\_\_\_

Name \_\_\_\_\_

In honor of \_\_\_\_\_

Address \_\_\_\_\_

In memory of \_\_\_\_\_

City \_\_\_\_\_ State \_\_\_\_\_ Zip \_\_\_\_\_

In memory of \_\_\_\_\_

Phone \_\_\_\_\_

No. of luminaria X \$10 = \_\_\_\_\_ enclosed





2021 SM West - Relay For Life\_Luminaria Form.pdf

Download

219.7 KB

## Calling All Cancer Survivors!

Please join us at the:  
**2021 Relay For Life of Shawnee Mission West**  
**Friday, October 1st**  
**Shawnee Mission West High School**

Relay For Life is a community celebration-style walk for fun...and to raise money and awareness about cancer. Not only is Relay For Life fun and inspirational, it also raises millions of dollars to help prevent and cure cancer.

Cancer survivors (one year, five years, one day--it does not matter) are invited to walk, run or wheelchair in the opening lap! We want to honor as many cancer survivors as we possibly can, so we HOPE you can join us! We also recognize that Caregivers are an important part of the cancer journey. Please don't forget to bring Caregivers with you too!

**The Cancer Survivor Lap will take place at approximately 6:00 p.m. on the track.** Cancer survivors will receive special recognition throughout the opening ceremony. More detailed information will come later!

If you are a cancer survivor and would like to be a part of the Survivor Reception and Survivor Lap, **Please fill out the information below and return to the address listed by September 20th, 2021.** For questions, please contact McKenzie Marshall, ACS Staff Partner, at 816.842.7111 or [mckenzie.marshall@cancer.org](mailto:mckenzie.marshall@cancer.org).

Visit [www.RelayForLife.org/ShawneeMissionYouthKS](http://www.RelayForLife.org/ShawneeMissionYouthKS) for additional event information.

**YES! I am a survivor and would like to participate in the Survivor Reception and Survivor Lap of the Relay For Life!**

Name \_\_\_\_\_

Address \_\_\_\_\_


City, State Zip \_\_\_\_\_

Home Phone \_\_\_\_\_

Please check for permission to announce your name Yes \_\_\_\_\_ No \_\_\_\_\_

I intend to invite a caregiver/friend to join me. Yes \_\_\_\_\_ No \_\_\_\_\_

Please mail registration to:  
American Cancer Society  
Attn: RFL of Shawnee Mission West  
1100 Pennsylvania Avenue  
Kansas City, MO 64105



2021 SM West - Relay For Life\_Survivor Form.docx

Download

51.3 KB



# Repeat Information



## HOMECOMING UPDATE

This year continues to bring our school challenges to sponsor large group events, especially indoors.

Even though we will not be able to host a traditional Homecoming Dance this year, the SM West Staff and StuCo Representatives want to take this opportunity to outline this year's Homecoming activities.

- Friday, Sept. 24 - SM West Pre-Game Tailgate at SM South Stadium. Come join your fellow students before the Homecoming Game to cheer on your own SM West Vikings. 5:00pm start with games, music, cheers, and tentatively a pre-game meal for purchase. Plans are still in the works. StuCo is selling food tickets for a tailgate meal on the bridge all this week. \$5.00 for a hot dog, chips and drink.

- Friday, Sept. 24 - Homecoming game SM West vs. Olathe Northwest 7pm at SM South Stadium. The Top 12 Homecoming King and Queen candidates will be introduced on the field at half time and then this year's Homecoming Court will be introduced.

We thank everyone for your continued support of our SM West students.

SM West is also please to announce the Top 12 Candidates for Homecoming King and Queen.

Homecoming TOP 12  
For the 21-22 School Year

**King Candidates**

Adrian Buckner  
Bremmer Campion  
Jonah Dolphino  
Will Edeal  
Anthony Fleming  
Zeke Greenwald  
Bruce Hight  
Tate Jackson  
Jacob Jansen  
Mehki Knight  
Ben Phillips  
Emanuel Rodriguez-Santos  
Curtis Roundtree  
Tyler VanDeventer

**Queen Candidates**

Ally Andrade  
Renee Awad  
Sameen Basha  
Mary Boetcher  
Tyra Eastwood  
Kassidy English  
Natalie Glean  
Eryka Heard  
Zoey Isom  
Perry Ross  
Abby Smith  
Alyssa Watson

## News from SM West Theatre Department

Hello, Vikings!

Please congratulate our cast of...

***THE DROWSY CHAPERONE!***

**MAN IN CHAIR**

Creighton Smith-Allaire

**MRS. TOTTENDALE**

Tori Riggs

**UNDERLING**

Caden Moffitt



**ROBERT MARTIN**

Will Edeal

**GEORGE**

Jackson Deardorff

**FELDZIEG**

Alec Wagner

**KITTY**

EmmaLouise Kirkendoll

**GANGSTER #1**

Wyatt Myers

**GANGSTER #2**

Mason Shultz

**ALDOLPHO**

Tate Jackson

**JANET VAN DE GRAAFF**

Faryn Clevenger

**THE DROWSY CHAPERONE**

Claire Deardorff

**TRIX THE AVIATRIX / ENSEMBLE**

Alyssa Watson

**SUPERINTENDANT / ENSEMBLE**

Phoenix Riesner

**ENSEMBLE**

Kessler Cash

Jette Dunker

Aspen Galloway

Maggie Johnson

Ava Myers

Miranda Philpot

Newt Sherrill

Aubree Smith

Gwenyth Truelove

**STAGE MANAGERS**

James Collett

Kat Bozick

## **SET CREW**

Piper Shields, Crew Chief

James Collett, Crew Chief

Georgia Forssberg

Olivia Frohardt

Sam Myers

Chloe Pemberton

Lana Skaggs

## **COSTUME CREW**

Alex Taylor, Crew Chief

Poppy Rose Croushore

Phoebe Scala

## **PROPS CREW**

Kat Bozick, Crew Chief

Casey Armstrong

Caiden Downey

Lance Her

Kayln Saunders

Rin Smith

## **LIGHTS CREW**

Evan Orme, Crew Chief

Arianna Gonzalez, Crew Chief

Ben Phillips, Asst. Crew Chief

Piper Dickinson

Abe Johnson

Talise Myers

Sebastian Reyes

## **SOUND CREW**

Caleb Harris, Crew Chief

J. Castillo

Gabe Corbin

Olivia Cushman

Katheryn Madsen

## **DIRECTED BY ERIC MAGNUS**

### **MUSICAL DIRECTION BY DEREK CROSS**

### **CONDUCTED BY CURTIS MULVENON**

### **CHOREOGRAPHED BY VALERIE MARTIN**

### **ASST. CHOREOGRAPHY BY KATHERINE ALLISON**

### **SET DESIGN BY BRUCE ADAMS**

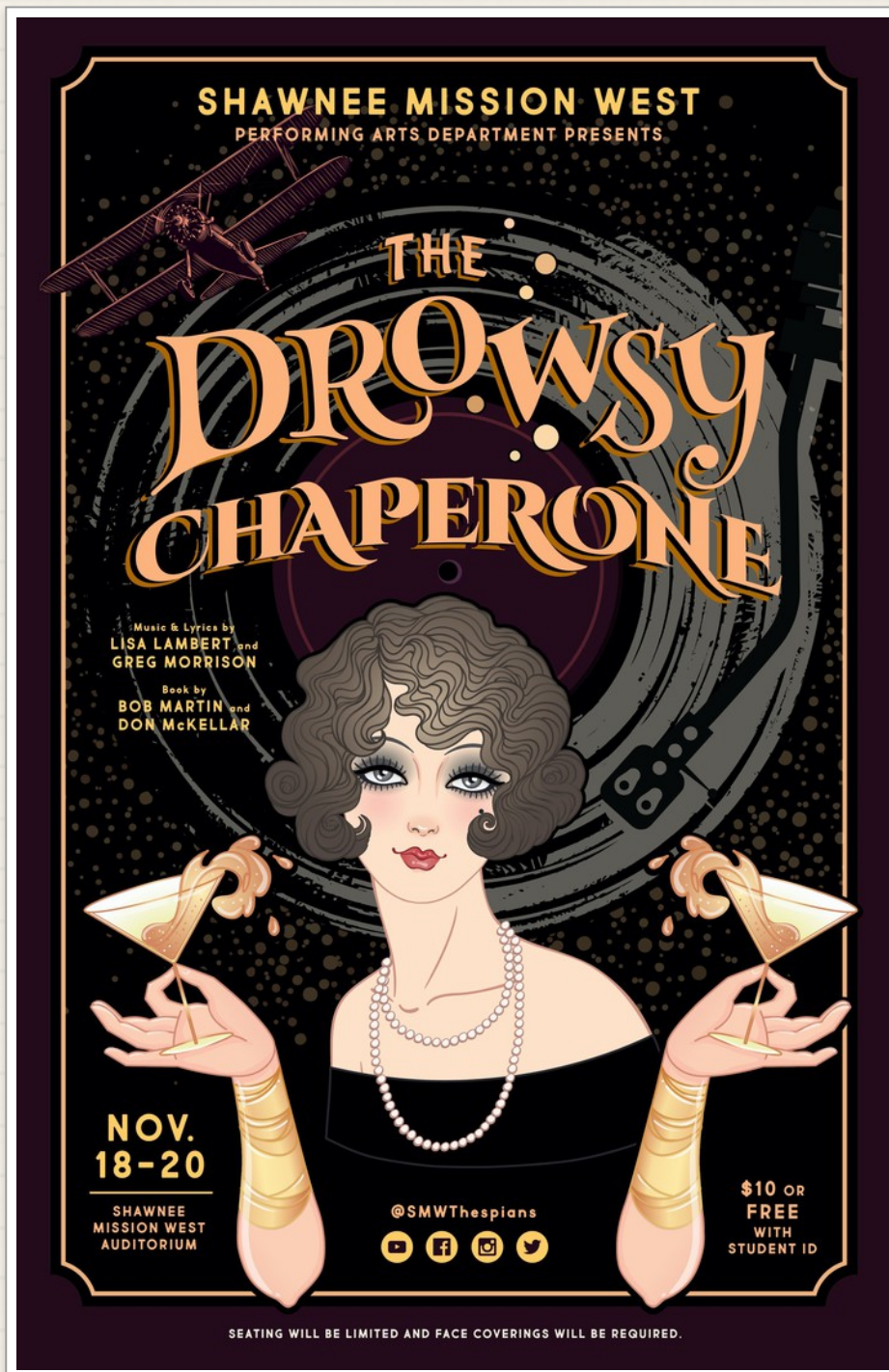
### **TECHNICAL DIRECTION BY BRANDON SCALF**

### **ASST. TECHNICAL DIRECTION BY ETHAN CRAPSER**

### **LIGHTING SUPERVISION BY CHUCK CLINE**

### **COSTUME SUPERVISION BY JENNIFER CLEVINGER**

### **SOUND SUPERVISION BY BILL THOMAS**



# SM West PTSA

## **Senior Parents Help Plan Mr. Viking and Senior Sizzle**

Parents are needed to help plan and organize these two big senior year events. Mr. Viking is a night of fun and talent as seniors compete in the Mr. Viking Pageant! Money fundraised from Mr. Viking is used for Senior Sizzle, our drug and alcohol-free event on seniors' last day of school. If you would like to volunteer for either, or both, events contact Tracy Johnson at [tracykjohn1970@gmail.com](mailto:tracykjohn1970@gmail.com).

Your SM West PTSA works to support our students and staff throughout the school year.

### **5 Reasons to join PTSA**

(membership is Annual)

#### **1. Benefit your child!**

*Research shows that children perform better when parents are involved both at home and at school.*

#### **2. Get Connected!**

*There is no better way to know what's happening at school.*

#### **3. Tap into a network!**

*PTA connects you to other parents and teachers.*

#### **4. Be a Role Model!**

*By becoming a PTSA member, you'll be demonstrating to your child, the importance you place on education.*

#### **5. Witness Improvement!**

*By getting involved in PTA you'll be part of the solution – helping to make positive changes.*

Please consider joining PTSA by using the following link. You may also download and print an application and return to the Middle office to be put in the PTSA mailbox.

## **PTSA MEMBERSHIP LINK**

Thank you,

Follow the link on MemberHub and Pay Online:

[PAYMENT LINK](#) - choose payment under Parent/Guardian and/or Student category. (Credit Card only)

*Thank you for joining! We look forward to a great 2020-2021 year.*

**Contact either Co-President if you have questions or need assistance.**

Co-President - Eric Forssberg

[eaforssberg@yahoo.com](mailto:eaforssberg@yahoo.com)

Co-President - MariaPurviance

[zakeox@hotmail.com](mailto:zakeox@hotmail.com)

¡Gracias por unirse! Esperamos un gran año 2020-2021.

Comuníquese con el Copresidente si tiene preguntas o necesita asistencia.

Copresidenta - Eric Forssberg

[eaforssberg@yahoo.com](mailto:eaforssberg@yahoo.com)

Copresidente - Maria Purviance

[zakeox@hotmail.com](mailto:zakeox@hotmail.com)



2021-2022 PTSA Membership Form Doc 2.pdf



Download

120.8 KB



Translated copy of 2021-2022 PTSA Membership Form Doc 2[1].pdf



Download

61.1 KB

## Message about Tele-Health Appointments

*In keeping with the Shawnee Mission School District's current guidance for Fall events during the 21-22 school year, external building visitors, including outpatient treatment case managers and clinicians, are not allowed in schools during the school day. This also applies to tele-counseling and virtual, web-based appointments. The expectation is that while students are in school they are engaged and in class, lunch and/or seminar. Parents/Guardians scheduling appointments for students during the school day should attempt to do so before or after school hours. Where an appointment must take place during school hours, the parent/guardian should contact the school attendance center so their student can be called out of class/school for the appointment. Thank you for your understanding and adherence to this expectation.*

## SENIOR YEARBOOK ADS

### SENIOR PARENTS

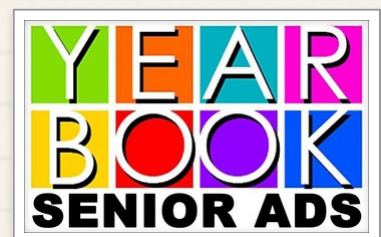
You have the opportunity to place a congratulatory tribute in the 2022 yearbook for your student. You can find all the information [HERE](#), including all the details related to sizes, prices and

deadlines in addition to the link to order online. The deadline

for the early bird rate is Oct. 8 and the deadline for regular price is Nov. 12. We will have yearbook students available to help design your ad and answer questions during parent-teacher conferences Oct. 20.

Please email [amymorgan@smsd.org](mailto:amymorgan@smsd.org) or [smwyearbookstaff@gmail.com](mailto:smwyearbookstaff@gmail.com) with questions.

Thanks!



# LIP SYNC AUDITIONS ARE COMING UP!!!

Before School  
September 22nd &  
24th 7:00-7:30

Sign-ups in Gill's room  
(123)

Find a group and  
perform a small  
portion at auditions

See you there!!!

Lip Sync is October 13th!



## Booster Club

Parents, don't forget to join Shawnee Mission West Booster Club. Use your Booster Club pass to get into Shawnee Mission West home football, soccer, basketball and volleyball games while supporting all West athletes, cheer and dance teams.

This is a great way to be able to support our SM West athletes and enjoy watching the games at a reduced cost if you were to buy at the door.

Here is the link to join the SM West Booster:

<https://smwboosterclub.com/purchase-membership/>

**REMEMBER: Fundraiser BELOW**

**Shawnee Mission West Booster Club Trash Bag Sale**

**All trash bags are \$12 per roll.**

**Sales start September 12th and will run through September 25th.**

**Trash bags will be delivered, in the Shawnee Mission West area, to your front door.**

**To place an order please use the following link:**

**<https://smwboosterclub.com/trash-bags/>**



**100% Recycled Plastic**

**TRASH BAGS**

*As much as 2 times thicker than most found in stores!*



*Fundraising Success in a Bag®*

**CUSTOMERS ASK FOR  
OUR BAGS BY NAME!**

**THANK YOU FOR  
YOUR SUPPORT!**

1.2 mil. - 60 per roll

T118



**18 Gallon  
White**

1.5 mil. - 40 per roll

T130



**30 Gallon  
Black**

2.0 mil. - 20 per roll

T139



**39 Gallon  
Yellow**

2.0 mil. - 15 per roll

T155



**55 Gallon  
Green**

**THICKER • STRONGER  
BIGGER • BETTER**

SM West will begin to follow a revised schedule beginning  
TUESDAY, Sept. 7.



Some noticeable differences:

1st- **The Late Starts on Thursdays** will begin this next week Sept., 7-10.. Classes on Thursdays will begin at 8:50am. **It is important to know that bus service pick up times WILL NOT CHANGE.** Students who need to ride the bus will be invited to sit on the bridge, cafeteria, or gym until classes begin. Students who drive or have access to a ride will not need to arrive until a time reasonable so that they can get to class by 8:50am.

2nd - SM West Administration has determined that it is in the best interest of students and staff that we move from a 3 lunch group rotation to a 4 lunch group rotation. We believe that the four rotations will allow for shorter lines and wait times as well as expanded space while students eat. Please have your students look at their Skyward schedule and/or talk to their 4th/5th period teachers to see how their lunch time has been adjusted beginning on Tuesday of next week.

On regularly scheduled days:

Students should arrive at school no later than 7:35am to allow time to get to their first class. The school day ends at 2:40pm. All students should be off campus shortly thereafter unless they are participating with a coach or a sponsor for an extracurricular activity.

**MONDAY**

1 <sup>st</sup> Period	7:40 - 8:30	50
2 <sup>nd</sup> Period	8:35 - 9:20	45
3 <sup>rd</sup> Period	9:25 - 10:10	45
4 <sup>th</sup> Period	10:15 - 11:00	45
5 <sup>th</sup> Period	11:05 - 1:00	85
6 <sup>th</sup> Period	1:05 - 1:50	45
7 <sup>th</sup> Period	1:55 - 2:40	45

**5<sup>th</sup> Block Lunch Schedule**

Lunch A	11:05 - 11:35
Lunch B	11:35 - 12:05
Lunch C	12:05 - 12:35
Lunch D	12:35 - 1:00

**TUESDAY**

2 <sup>nd</sup> Period	7:40 - 9:15	95
8 <sup>th</sup> Seminar	9:20 - 10:55	95
4 <sup>th</sup> Period	11:00 - 1:00	90
6 <sup>th</sup> Period	1:05 - 2:40	95

**4<sup>th</sup> Block Lunch Schedule**

Lunch A	11:00 - 11:30
Lunch B	11:30 - 12:00
Lunch C	12:00 - 12:30
Lunch D	12:30 - 1:00

**WEDNESDAY**

1 <sup>st</sup> Period	7:40 - 9:15	95
3 <sup>rd</sup> Period	9:20 - 10:55	95
5 <sup>th</sup> Period	11:00 - 1:00	90
7 <sup>th</sup> Period	1:05 - 2:40	95

**5<sup>th</sup> Block Lunch Schedule**

Lunch A	11:00 - 11:30
Lunch B	11:30 - 12:00
Lunch C	12:00 - 12:30
Lunch D	12:30 - 1:00

**THURSDAY**

LATE START – PLC	7:30 - 8:45	75
2 <sup>nd</sup> Period	8:50 - 10:25	95
8 <sup>th</sup> - Advisory	10:30 - 10:55	25
4 <sup>th</sup> Period	11:00 - 1:00	90
6 <sup>th</sup> Period	1:05 - 2:40	95

**4<sup>th</sup> Block Lunch Schedule**

Lunch A	11:00 - 11:30
Lunch B	11:30 - 12:00
Lunch C	12:00 - 12:30
Lunch D	12:30 - 1:00

**FRIDAY**

1 <sup>st</sup> Period	7:40 - 9:15	95
3 <sup>rd</sup> Period	9:20 - 10:55	95
5 <sup>th</sup> Period	11:00 - 1:00	90
7 <sup>th</sup> Period	1:05 - 2:40	95

**5<sup>th</sup> Block Lunch Schedule**

Lunch A	11:00 - 11:30
Lunch B	11:30 - 12:00
Lunch C	12:00 - 12:30
Lunch D	12:30 - 1:00

SM  
WEST  
HS  
2021-2022  
BELL  
SCHEDULE



SMW 21-22 Bell Schedule (Late Start)[1].pdf

Download  
117.7 KB

## SM West Theatre

### JOIN THESPIANS / DRAMA CLUB

Click on the link below and join our GOOGLE CLASSROOM page at...

[https://classroom.google.com/c/Mzc20DAxOTU4NDcx?  
cjc=m6tkiyk](https://classroom.google.com/c/Mzc20DAxOTU4NDcx?cjc=m6tkiyk)



## **HEY PARENTS! JOIN SPOTLIGHTERS**

Did you know there is a parent group at Shawnee Mission West dedicated to fostering the performing arts known as Spotlighters? If the adults in your life are interested in learning more, please share the following information.

The next meeting of the year is Monday, October 4th at 6:00 PM located in the choir room #153.

We meet the first Monday of each month.

Come and check it out to learn more about all we do to support these great programs!

We have a website that will share events and upcoming dates.

<https://smwspotlighters.com/>

We're also on Facebook and Twitter.

If you have any questions, please feel free to reach out to any of the following board members:

Co-Presidents:

- Stephanie Watson - [sjwatson60@gmail.com](mailto:sjwatson60@gmail.com)

- Courtney Moffitt - [moffitt5some@gmail.com](mailto:moffitt5some@gmail.com)

Membership: Charlotte Wallenburg - [mwallenburg@yahoo.com](mailto:mwallenburg@yahoo.com)

Secretary: Kristie Orme - [kristieremsterorme@gmail.com](mailto:kristieremsterorme@gmail.com)

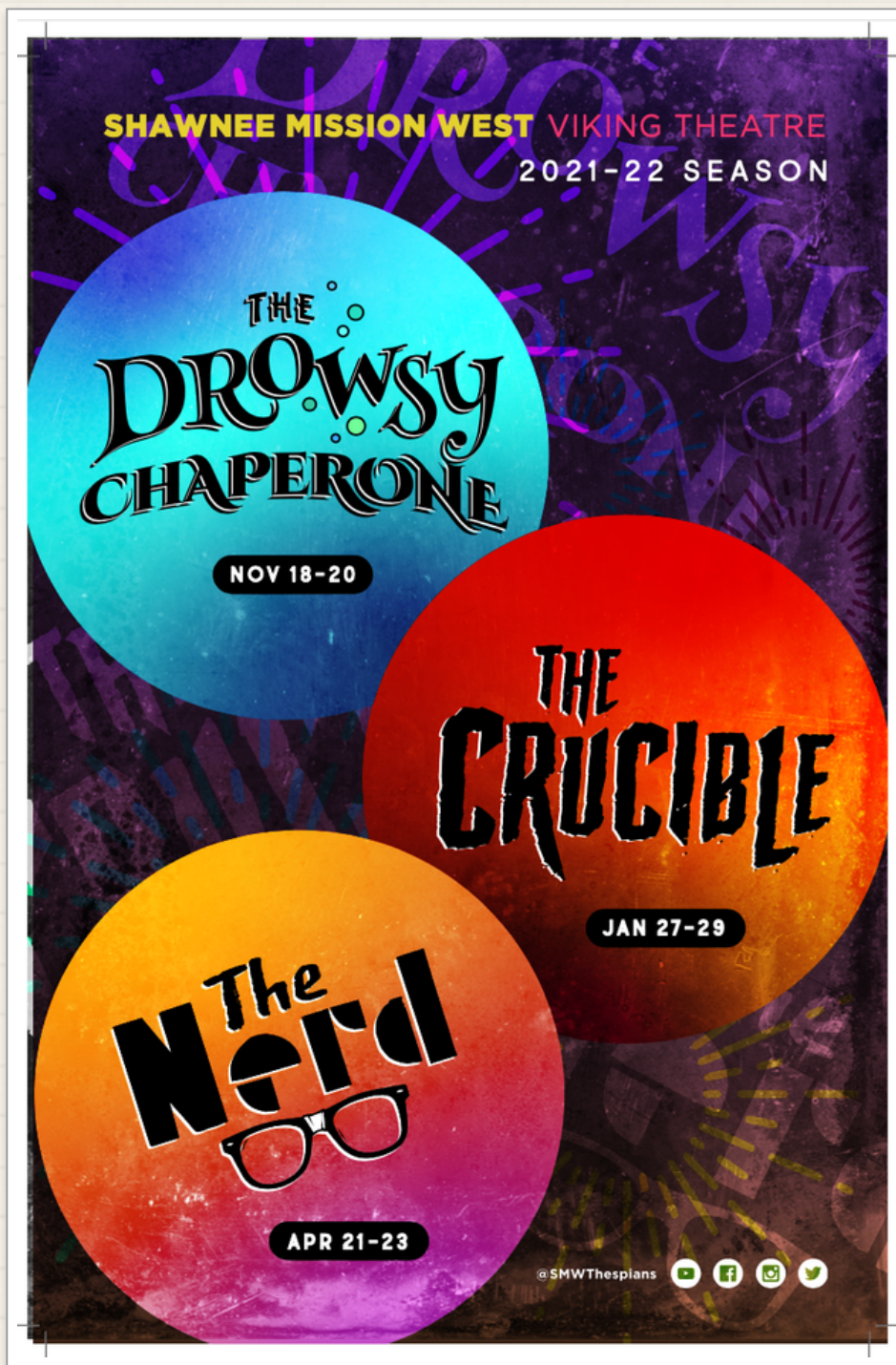
Treasurer: Becca Wagner - [becca.wagner@yahoo.com](mailto:becca.wagner@yahoo.com)

VP Programs:

- Jan Good-Bollinger - [jgoodbollinger@gmail.com](mailto:jgoodbollinger@gmail.com)

- Katy Myers - [katy.myers@yahoo.com](mailto:katy.myers@yahoo.com)

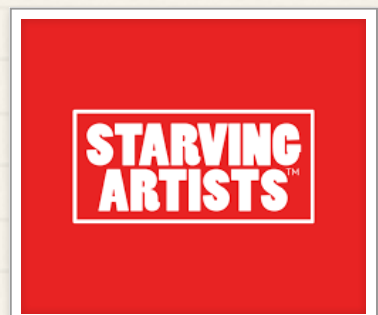
VP Publicity: Jennifer Clevenger - [jeninote@clevengerfamily.net](mailto:jeninote@clevengerfamily.net)



## Starving Artists Club

Mrs. Amanda Courtney would like to invite interested students to:

Starving Artists - a collective of students interested in the creation and interpretation of art, literature, & media - will begin meeting in Room 128 w/ Courtney starting September 9th; we will meet each Thursday thereafter. Join us or email [amandacourtney@smsd.org](mailto:amandacourtney@smsd.org) for more details!





## Health Partnership Clinic Open at SM West

A school-based health clinic for all Shawnee Mission School District students and their siblings (3 to 20 years old) SM West High School, 8800 W. 85th St.

The clinic will be open from 11 a.m. to 3 p.m. on Thursdays, except when school is not in session.

Health Partnership Clinic (HPC) and the Shawnee Mission School District are partnering to provide access to primary and preventative health care, chronic disease management, mental health services, and dental care to district students and their siblings.

For more information about the Health Partnership Clinic, or to schedule a medical appointment, Shawnee Mission School District parents should call 913-648-2266. [More information also is available here.](#)

### **Services will include:**

Physical exams

Sports physicals

Immunizations, including vaccines for COVID-19

COVID testing

Age-appropriate health screenings

Preventative education

Referrals to specialty services

Sick visits

Management of acute and chronic problems and mental health services

Dental Care including screenings, fluorides, and restorative care

Most insurance plans are accepted, including KanCare/Medicaid. As a community health center, HPC offers a sliding-fee discount program which is based on income and household size. Fees are waived for students experiencing homelessness. Free medicaid and Marketplace insurance enrollment will also be available.

"The idea is to break down barriers to health care," Shelby Rebeck, health services director for the Shawnee Mission School District shared. "Barriers for many of our students

and parents’/guardians’ inability to take time away from hourly jobs. Health Partnership provides a tremendous opportunity for our students to receive critical health care so they can be successful in school.”

The clinic offers pediatric-focused care to treat most health conditions that affect children and adolescents, Amy Falk, HPC’s chief executive officer shared.

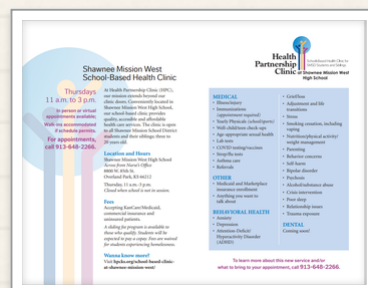
“We basically function as a doctor’s office, but in a school building,” Falk noted. “Services are available in person or virtual, and walk-ins will be accommodated if the schedule permits. The primary goal is to provide easy, immediate access to quality and affordable health care.”

The goal is to serve as a medical home for students and offer an additional access point to primary care, Wael S. Mourad, MD, MHCM, FAAFP, and HPC’s chief health officer, shared.

“Beyond a focus on primary health care, it is important we meet the social and emotional needs of children and adolescents to help them reach their individual potential,” Mourad added.

The clinic will open across from the nurse’s office at SM West. “The Shawnee Mission School District and Health Partnership Clinic are an example of how two organizations can come together to help improve the lives of children,” says Steve Loe, principal of Shawnee Mission West High School. “The school-based health clinic will greatly expand the resources of our school nurse and social worker and help support our goal to have every student succeed.”

Please take a moment to download the press release/fliers for more information. (The PDF attachments are larger images of the pictures below.)





HPC News Release.pdf

[Download](#)  
289.5 KB



HPC Brochure English.pdf

[Download](#)  
367.9 KB



HPC Spanish Brochure.pdf

[Download](#)  
372.1 KB

## Tardy Policy

### Tardy Action Plan 2021-2022:

1. 2 tardies = Teacher has a student conference (Teacher Documents in Skyward)
2. 3 tardies = Teacher 15 min detention + parent contact (Teacher Documents in Skyward)
3. 5 tardies = Admin sends automatic warning email sent home through Skyward
4. 10 tardies = Admin assigns 1 hour detention and parent contact (Admin Document in Skyward)
5. 20 tardies = Admin assigns 2 hour detention and parent contact (Athletes miss 1 game/activities)
6. 30 tardies = Admin assigns 1 day of ISS and parent contact (Admin Document in Skyward)
7. 40 tardies = Admin assigns 1 day of ISS and parent conference (Admin Document in Skyward)
8. 50 tardies = Admin assigns 2 day of ISS and passing privileges removed (Admin Document in Skyward)

\*Every 10th tardy = 1 day of Unexcused Absence



Please use the attendance hotline to report an absence or late arrival. Please allow 30 minutes to process an early dismissal.

**993-7845**



## STUDENT PARKING

Student Parking is open to registered drivers that are in 10th, 11th or 12th grade. Parking passes are \$60 for the academic year and you can pay online through efunds or have your student bring payment to the bookkeeping office.

Please have your student complete the parking pass form, then bring the form and proof of payment to the front security office to Officer Garlington. He will then give your student a parking pass to be placed on the back driver's side window of their car.

Please remind your student that there are designated staff and student parking areas and they need to make sure they follow all rules and procedures. Security staff will administer tickets for failure to follow rules/procedures.



Parking Registration Form.pdf

 [Download](#)  
616.0 KB

## FALL SPORTS

Fall Sports have begun.

There are two places where a family can look for information about scheduling.



First try: [www.sunflowerleague.org](http://www.sunflowerleague.org) for the most accurate information for the entire Sunflower league.

The Shawnee Mission West Athletic Department now has a new website. Please visit <https://shawneemissionwestvikings.com/> for all things related to Viking Athletics.

Thanks.

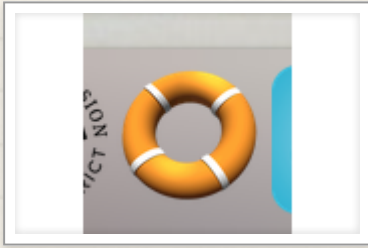
**Todd McAtee, CAA**

**Shawnee Mission West High School**

**Athletic Director**

**(913) 993-7843**

**[toddmcatee107@smsd.org](mailto:toddmcatee107@smsd.org)**



# Technology and MacBook Help

If your student has an issue with technology we ask that you FIRST try to do some independent problem solving.

- 1) Try going to the SM West Website to look at the [Technology Rescue Site](#). This google site has many solutions that students can do at home to problem solve their tech issues.
- 2) Go to the "Lifesaver" icon on your browser bar. This takes you to the SMSD Help Desk to complete a Help request.
- 3) BE PATIENT. Please wait for a staff member to call you down to the library for assistance. Please be assured that staff are working very hard to meet the needs of all of our students.

Español:

El 16 de agosto, el personal y los voluntarios distribuyeron MacBooks a los estudiantes. Si su estudiante no recibió un MacBook, por favor sea paciente. Nuestro personal de tecnología está trabajando continuamente para resolver problemas y solucionar problemas técnicos para que todos los estudiantes tengan un MacBook que funcione.

Si su estudiante tiene un problema con la tecnología, le pedimos que PRIMERO intente resolver algunos problemas de forma independiente.

- 1) Intente ir al sitio web de SM West para ver el sitio de [Technology Rescue Site](#) (Rescate de tecnología). Este sitio de Google tiene muchas soluciones que los estudiantes pueden hacer en casa para resolver sus problemas de tecnología.
- 2) Ve al icono "Salvavidas" en la barra de tu navegador. Esto te llevará al Servicio de ayuda de SMSD para completar una solicitud de ayuda.
- 3) SEA PACIENTE. Espere a que un miembro del personal lo llame a la biblioteca para pedir ayuda. Tenga la seguridad de que el personal está trabajando muy duro para satisfacer las necesidades de todos nuestros estudiantes.

# SENIOR OPEN LUNCH

On Tuesday, Aug. 17th, an email was sent to the Parent's/Guardians of all SM West Seniors in regards to the Senior Open Lunch Opportunity.



Only Seniors are given the privilege to leave campus during their lunch time, but each of them need to have a Parent Permission form on file. Parents were sent a Google Form link via email. Please use this link to complete the form for your senior. The email address MUST come from a Parent email and not a student email.

If you are the parent/guardian of a senior and did not receive the email link, you may email [jennifersilverstein@smsd.org](mailto:jennifersilverstein@smsd.org).

Español:

El martes, 17 de Agosto, un correo electrónico fue enviado a los padres/ Guardianes de todos los SM West Seniors en lo que respecta a la Senior Open Lunch Opportunity (Comer Afuera de la Escuela durante Almuerzo).

Sólo a las personas de 12 grado se les da el privilegio de salir del campus durante su hora de almuerzo, pero cada uno de ellos necesita tener un formulario de permiso de los padres en el archivo. A los padres se les envió un enlace de formulario de Google por correo electrónico. Utilice este enlace para completar el formulario para su superior. La dirección de correo electrónico DEBE venir de un correo electrónico de los padres y no de un estudiante.

Si usted es el padre/tutor de un anciano y no recibió el enlace de correo electrónico, puede enviar un correo electrónico [jennifersilverstein@smsd.org](mailto:jennifersilverstein@smsd.org).



## Performing Arts Newsletter

We are excited to share about the events and resources the Performing Arts has for the new school year. Please welcome our new music teachers and learn about one of SMSD summer music programs. Here is the link for the Performing Arts August Newsletter.

<https://my.visme.co/view/q6xey79r-august-pa-newsletter>



## SMAC PTA CLOTHING EXCHANGE

August - December 2021



The Shawnee Mission Area Council PTA Clothing Exchange offers gently used clothing and shoes from infant to adult sizes. The Exchange is a free service open to those who live within the SMSD boundaries. All are welcome. If school is not in session, the Clothing Exchange is closed. [www.smsd.org](http://www.smsd.org)

### SCHEDULE

4:30pm-7:00pm	9:30am-12:00pm
THURS, AUG 19	
	FRI, AUG 27
THURS, SEPT 2	
	FRI, SEPT 10
THURS, SEPT 16	
	FRI, SEPT 24
CLOSED FOR CHANGEOVER	
THURS, OCT 7	
	FRI, OCT 15
THURS, OCT 21	
	FRI, OCT 29
THURS, NOV 4	
	FRI, NOV 12
THURS, NOV 18	
CLOSED FOR THANKSGIVING	
THURS, DEC 2	
	FRI, DEC 10
THURS, DEC 16	

### COVID-19 PROCEDURES

- Everyone must wear a face mask.
- Please limit the number of people in your group.
- No children if possible.
- Please maintain 3 foot distancing.
- Everyone will be asked to use hand sanitizer before entering.

### NEW UNDERWEAR & SOCKS PROGRAM

Each child enrolled in the Shawnee Mission School District can receive 5 new pairs underwear and socks each semester.

Proof of enrollment is required:  
Skyward account on phone, letter from the school, student ID card.

### HOW TO DONATE & VOLUNTEER

Go to [smac-pta.org/clothing-exchange](http://smac-pta.org/clothing-exchange) for donation options and volunteer sign-up links.

### LOCATION & CONTACT

SMSD Early Childhood Education Center  
6701 West 83<sup>rd</sup> St.  
Overland Park, KS 66204  
Enter at back of the building at Door #7  
Web: [Smac-pta.org/clothing-exchange](http://Smac-pta.org/clothing-exchange)  
Email: [smacce@smac-pta.org](mailto:smacce@smac-pta.org)





## SMAC PTA CLOTHING EXCHANGE

### Agosto - Diciembre 2021



El intercambio de ropa de la PTA del Consejo del Área de la Misión de Shawnee ofrece ropa y zapatos usados con cuidado, desde tallas para bebés hasta adultos. Exchange es un servicio gratuito abierto a quienes viven dentro de los límites de SMSD. Todos son bienvenidos. Si el edificio de la escuela está cerrado, el intercambio de ropa está cerrado. [www.smsd.org](http://www.smsd.org)

#### Calendario

4:30pm-7:00pm	9:30am-12:00pm
Jueves 19 de agosto	
	Viernes, 27 de agosto
Jueves 2 de septiembre	
	Viernes 10 de septiembre
Jueves 16 de septiembre	
	Viernes 24 de septiembre
<b>CERRADO POR CAMBIO</b>	
Jueves 7 de octubre	
	Viernes 15 de octubre
Jueves 21 de octubre	
	Viernes 29 de octubre
Jueves 4 de noviembre	
	Viernes 12 de noviembre
Jueves 18 de noviembre	
<b>CERRADO POR THANKSGIVING</b>	
Jueves 2 de diciembre	
	Viernes 10 de diciembre
Jueves 16 de diciembre	

#### COVID-19 PROCEDURES

- Todos deben usar una mascarilla.
- Limite el numero de personas en su grupo.
- Sin hijos si es posible.
- Mantenga una distancia de 3 pies
- A todas se les pedira que usen desinfectante para manos antes de entrar.

#### Nuevo Ropa Interior y Calcetines

Cada niño inscrito en el SMSD puede recibir 5 nuevos pares de ropa interior y calcetines cada semestre. Se requiere comprobante de inscripción: Cuenta Skyward en el telefono o Carta de la escuela.

#### Como donar y ser voluntario

Ir [smac-pta.org/clothing-exchange](http://smac-pta.org/clothing-exchange) para conocer las opciones de donacion y registrarse como voluntario.

#### Ubicacion y Contacto:

SMSD Early Childhood Education Center  
6701 West 83<sup>rd</sup> St.  
Overland Park, KS 66204  
La entrada esta en la parte trasera del edificio en la Puerta #7  
Web: [Smac-pta.org/clothing-exchange](http://Smac-pta.org/clothing-exchange)  
Email: [smacce@smac-pta.org](mailto:smacce@smac-pta.org)



## Covid and Masking Update

Our nation and community continue to deal with the effects and repercussions of the Covid-19 Pandemic. The goal of our SMSD Board of Education is to keep students in school. The School Board recently had an emergency session to vote on the use of masks in school. Here is the announcement from this meeting:

### Shawnee Mission Board of Education Approves Updated Mitigation Plan

At the August 5, 2021, special meeting of the Shawnee Mission School District Board of Education, the Board approved

changes to the COVID-19 mitigation plan.

**These changes will require all children and adults in grades PreK-12 to wear masks in all district facilities.**

The details of the approved plan are included here:

[Mitigation Plan, approved by the Board on Aug. 5, 2021](#)  
[Handout, plan approved on Aug. 5, 2021](#)

The vote passed with a 6 to 1 vote in favor.

Keeping schools open and safe continues to be a top priority in the SMSD in the 2021-2022 school year.

- In order to keep all students and staff safe at school please help us with the following:
- Report all positive cases of COVID-19 to the school nurse.
- Keep your student home when they are ill and get a PCR test.
- PCR Testing – SMSD only accepts PCR COVID tests
  - o SMSD offers free PCR testing Monday- Friday 8am-4pm when school is in session by calling 913-993-6218
  - o Free PCR testing is also offered at community testing sites such as [www.gogettested.com/kansas](http://www.gogettested.com/kansas), CVS, Walgreens, etc.
- If you or your student have a known exposure to a positive case of COVID-19 outside of school/school related activity, please contact JCDHE at 913-715-2819 for instructions.



Due to high community transmission rates of COVID-19 in the county and lack of vaccine availability for all individuals, the Shawnee Mission School District (SMSD) will require masking of all children and adults in grades PreK-12 and in all district facilities until further notice.



August 5, 2021



### MASKING:

Masks are required for all PreK-12 children and adults until such a time as all students have the opportunity to be fully vaccinated and community transmission levels decrease.

\*Individuals do not need to mask when outdoors. This includes students participating in elementary recess.



### VACCINATIONS:

It is recommended that all eligible individuals receive the COVID-19 vaccination. Vaccination has proven to be the most effective means for individual protection against COVID-19 and in halting the transmission of COVID-19. It is strongly recommended that unvaccinated individuals continue to mask until fully vaccinated (2 weeks after the last dose in series).



### EXCLUSION:

Fully vaccinated individuals will not be quarantined with an exposure unless they are/become symptomatic. COVID-19 positive individuals will be excluded from school/activities for 10 days and 24 hour symptom improvement.

Center for Academic Achievement • 8200 W. 71<sup>st</sup> Street, Shawnee Mission, KS 66204 • (913) 993.6200 • [www.smsd.org](http://www.smsd.org)

## School Supplies

There is no recommended school supply list for all of our SM West students. Each student's individual schedule of classes and teachers is so varied, therefore we suggest waiting to purchase supplies until after your student has met their teachers and been given recommendations of supplies.



Our recommendation is that all students have a supply of pens and pencils and a spiral or paper for the first days of school.

Your student may also choose to have an individualized organization system. Maybe your student would like a three ring binder with tabs and folders for each class.

Maybe another student might prefer an accordion file to house handouts and work from each class. Encourage your student to choose a system that fits their needs and personality.



## Online Verification

Please remember that all students and families need to complete the **Online Verification** each year.

Please open the attached document for instructions and links for both English and Spanish versions.

[SKYWARD LINK](#)

It is recommended to use a desktop or laptop computer as opposed to a phone app to complete the forms.

There will be a variety of forms:

- Emergency Contact Information Update
- Over the Counter Medication release
- Household Economic Survey (guides how federal funds might help Shawnee Mission students)
- Review consent of technology guidelines
- Athletic packet
- AND MORE

Please view the PDF below for instructions once you have logged into your Skyward account.

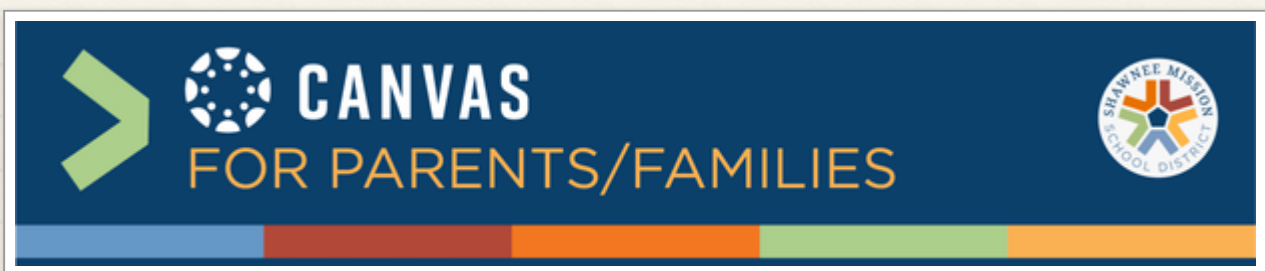
If you need help logging into Skyward, please email [jennifersilverstein@smsd.org](mailto:jennifersilverstein@smsd.org) for assistance with your LOGIN or resetting your password.



ONLINE VERIFICATION - Google Docs.pdf



Download  
353.5 KB



## Canvas

Canvas is an educational and information portal that our teachers use to post assignments, curriculum content, calendars...and more. All students will have a Canvas Portal that will

house the pages from their teachers. Parents can also sign up as an Observer in Canvas. Observers can link their Canvas account to their student's account so they can see assignment due dates, announcements, and other course content. Observers can view the course content but cannot participate in the course.

The smsd.org website has a tremendous amount of information and guides to help parents learn more about Canvas.

Use this link to access these instructional guides:

<https://www.smsd.org/academics/digital-learning-initiative/canvas/parents>

## Fee Payment

### PAYMENT OF FEES

Thank you to those families who were able to come up to school for fee payment or made payments online. Efunds will continue to be active for online payments.

### EFUNDS LINK

You may also come to our offices from 7:00am-3:30pm to make payments.

Our Bookkeeper is also available to answer questions via email or phone.

Cristina Seyler [cristinaseyler@smsd.org](mailto:cristinaseyler@smsd.org) 993-7810

Timely payment of fees as well as the development of payment plans allows for the instructors to have available funds to purchase materials necessary for the beginning of the school year. Sunflower Insurance and KanCare do cover a portion of the fees. Please reach out if you have questions.



## Food Service Announcement

**Food Service welcomes every student to enjoy FREE school breakfast and lunch for the 2021-22 school year.**

Once again, the United States Department of Agriculture (USDA) has put into effect nationwide waivers allowing school food service departments to continue to serve healthy school meal options free to all students.

**There are no Free & Reduced Meal Applications for 2021-22 school year since meals are FREE for all students.**

**Families are encouraged to complete a Household Economic Survey (HES) as part of the Parent Online Verification available on Skyward sometime in July.** The purpose of the HES form is to assist families and our district in the upcoming year.

- Even though all students will be able to eat breakfast and lunch at no cost this year, the HES form generates additional state funds for our schools.

- If your family qualifies, the district will receive funds to help support programs providing additional support for learners with a variety of needs.
- Additionally, qualifying on the HES provides other benefits to families which may include free/reduced transportation fees and preK enrollment. If families do not complete the HES, State funding for our school district may be reduced.
- **Do not complete the HES form if you are Directly Certified to receive free meals.** If you receive state assistance, call the SMSD Food Service office before completing the HES form.

Eligibility determination will be made according to the guidelines established by the Kansas Department of Education. Please contact the SMSD Food Service office with any questions.

This institution is an equal opportunity provider.

**Monitor student meal accounts by visiting SchoolCafé.** You'll need to set up username and password. There are multiple benefits to this new software including the ability to:

- View your child's account balance anytime.
- Access direct certification information
- See exactly what a la carte items are being purchased.
- Set limits on a la carte purchases.
- View Menus with nutrient and allergen information.

SchoolCafe Link: <https://www.schoolcafe.com/>

Add funds to your students' account for a la carte items through EFunds applicaiton.

EFunds Link:

<https://payments.efundsforschools.com/v3/districts/55790>



## IMPORTANT INFORMATION ABOUT SCHOOL BUS TRANSPORTATION

Dear Parents/Guardians,

During the week of September 20, DS Bus Lines, the district's transportation service provider, will implement roster checks in order to verify accurate counts of riders enrolled and receiving transportation services. For any student riders not yet registered for transportation, please note that parents will be contacted by school offices to arrange alternative (parent provided) transportation.

To register students for transportation visit DS Bus Lines

[website](#). You can contact DS Bus Lines at 913.384.1100

For schools that offer regular education transportation, families who may qualify for free transportation should consider completing the online Household Economic survey (HES) located in Skyward (Online Verification Link). Please contact your child's school office for assistance in completing this form.



**The front circle drive buses.**

213  
186  
196  
192  
193  
202  
195  
198  
210  
203

**Antioch Side buses.**

166  
182  
183  
188  
185  
189  
199



bus location visual 2021-2022.pdf

[Download](#)  
149.3 KB



JoCo Library has free live homework help until 11pm and other nifty live homework assistance at <https://www.jocolibrary.org/research/homework-help-teens>.

The ecard registration is at <https://www.jocolibrary.org/using-the-library/getting-started>.

En Español: [JoCo Library](#) tiene ayuda en vivo gratis hasta las 11pm y otra asistencia en vivo.

El [registro del ecard se encuentra aquí](#)

Thank you to our West community. Your patience and your positive attitude are much appreciated!!!

## NOTE FROM OUR NURSE

1. Please notify the nurse (993-7816 or [marnibollella@smsd.org](mailto:marnibollella@smsd.org)) if your child has COVID symptoms, a positive COVID test result or an exposure to COVID.
2. COVID vaccines are not required for students, however if your student has been vaccinated please forward a copy of their vaccination card to the nurse ([marnibollella@smsd.org](mailto:marnibollella@smsd.org)) so that we can include this in your student's vaccination records. Students who are vaccinated will not be required to quarantine if exposed to someone who has COVID.
3. Free COVID testing is available 7 days a week at [www.gogettested.com](http://www.gogettested.com)
4. The Johnson County Department of Health and Environment (JCDHE) will be doing contact tracing for any positive COVID cases that result in exposures at school. JCDHE will notify students who need to remain home due to an exposure.
5. The school nurse will still exclude students from school who have COVID symptoms, the same as last school year.
6. If your student has a food allergy and will require meal modifications, please e-mail the nurse ([marnibollella@smsd.org](mailto:marnibollella@smsd.org)). If they are able to manage their own food choices you do not need to notify the nurse.
7. If your student will be carrying his/her own medication (inhaler, epi-pen, insulin) please let the nurse know ([marnibollella@smsd.org](mailto:marnibollella@smsd.org)).



• If you or your student have symptoms of COVID-19, please stay home and contact your school nurse for testing information. Symptoms to watch for:

- o New loss of taste or smell
- o Sore Throat
- o Cough
- o Shortness of breath o Fatigue
- o Headache
- o Runny Nose
- o Congestion
- o Fever
- o Chills
- o Body/muscle aches o Nausea
- o Vomiting

- Close contacts of positive COVID cases will receive an email with instructions for testing and return dates.
- SMSD only accepts PCR tests for return to school/activities

Thank you!

**Marni Bollella, BSN, RN, CFRN**

School Nurse, Shawnee Mission West

[marnibollella@smsd.org](mailto:marnibollella@smsd.org)

(913)993-7816 (office)

(913)993-1483 (fax)